



Alliance of Cardiovascular Professionals

P.O. Box 2007
Midlothian, VA 23113
PH: 804.632.0078 FX: 804.639.9212
www.acp-online.org



About ACVP

- Established in 1957 – the largest most comprehensive cardiovascular organization in the country (non-physicians) representing all levels and all specialties in cardiovascular care.
- Over 3000+ members
- Mission of ACVP is:
 - To meet the needs of all cardiovascular providers
 - To promulgate standards
 - To promote recognition of the cardiovascular profession



About the Field

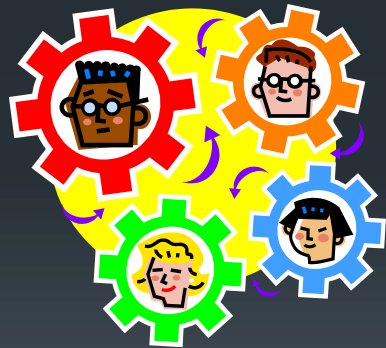
- CV technologists and technicians held about 49,500 jobs in 2008.
- 77% of all jobs were in hospitals – primarily in cardiology departments
- Our membership is a fair reflection – the two main areas of cv professionals include the cardiac cath lab (invasive) and echocardiology (noninvasive).
- Professionals also work in ORs; Emergency Rooms; in Holter, Stress & Pacemaker clinics, too.

Workforce Data

- Not a lot of data has been collected regarding workforce
- Most of the data collected is geared towards performance and quality control.
- Data collection in emergency departments as well as cath labs help identify areas for improvement.



The Cardiovascular Workforce



- Employment is expected to grow much faster than average
- Professionals with multiple credentials, trained to perform a wide range of procedures, will have the best prospects
- Workforce is expected to increase through 2018.

Why Workforce Demand is Expected to Increase

- Demand for professionals stem from widespread heart disease and aging population.
- Older people have a higher incidence of heart disease and complications of the heart and vascular system.
- Advances in medicine result in greater public awareness resulting in early detection.



Workforce Movement

- Those individuals with multiple credentials who are trained to perform a wide range of procedures will have the best prospects.
- Those willing to relocate or work irregular hours will have better job opportunities
- Cardiovascular professionals may move between specialties.



Cardiovascular Wages



- Median annual wages of cardiovascular professionals was \$47,000 in May 2008.
- The middle 50% earned between \$32,800 and \$61,580.
- Management earns approximately 25% more.
- Evaluations may occur monthly by a team leader and annually by a supervisor.

Workforce Impact on Advocacy

- As the pressures on the workforce continue to grow, the need to delineate expertise through credentials becomes more critical – who can practice what and where.
- What are the pathways to becoming a cardiovascular professional – these have become myriad.



What Happens to the Data



- The data currently collected relates to performance and quality indicators
- National Cardiovascular Data Registry is a unique registry that focuses on quality elements and helps hospitals gather information and benchmark, as well.
- The NCDR provides streamlined reporting for reimbursement purposes, too

Future Efforts

- ACVP is committed to tracking quality and performance data
- We collect salary information
- We analyze membership information against labor data collected by government
- We will explore workforce trends for improving healthcare





For More Information

- For information about cardiovascular professionals and the services they provide:
ACVP
PO Box 2007
Midlothian, VA 23113
- PH: 804.632.0078; FX: 804.639.9212
- www.acp-online.org
- Contact Valarie Coyle, Meetings Director